

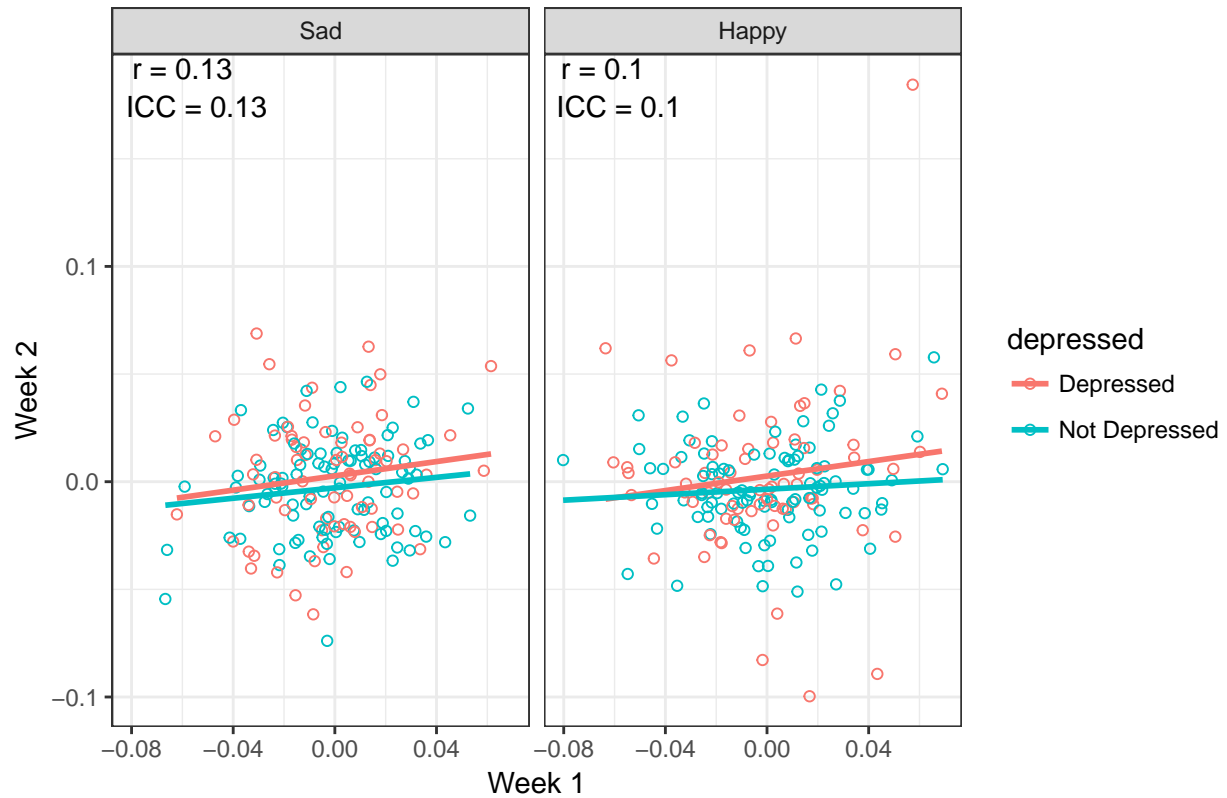
Eye-Tracking: Bias Test-Retest Stability

Jason Shumake

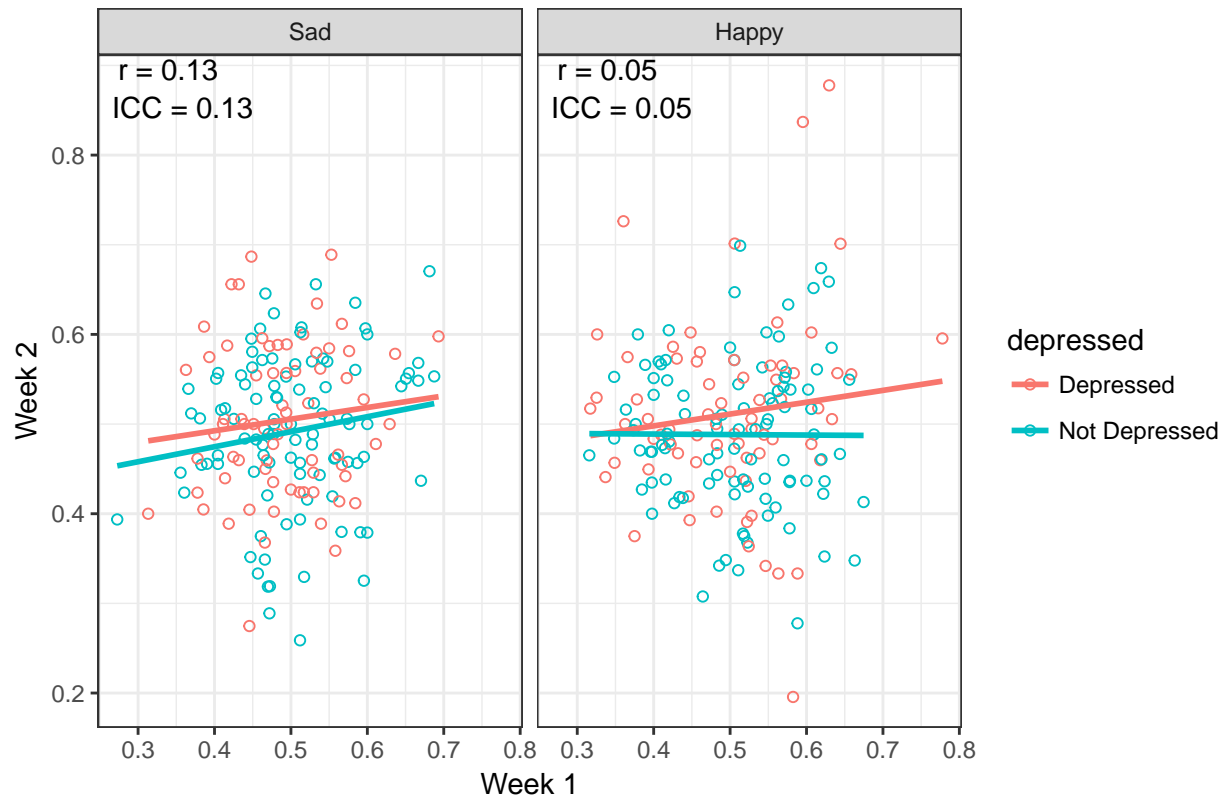
2/8/2018

Based on a sample size of 169

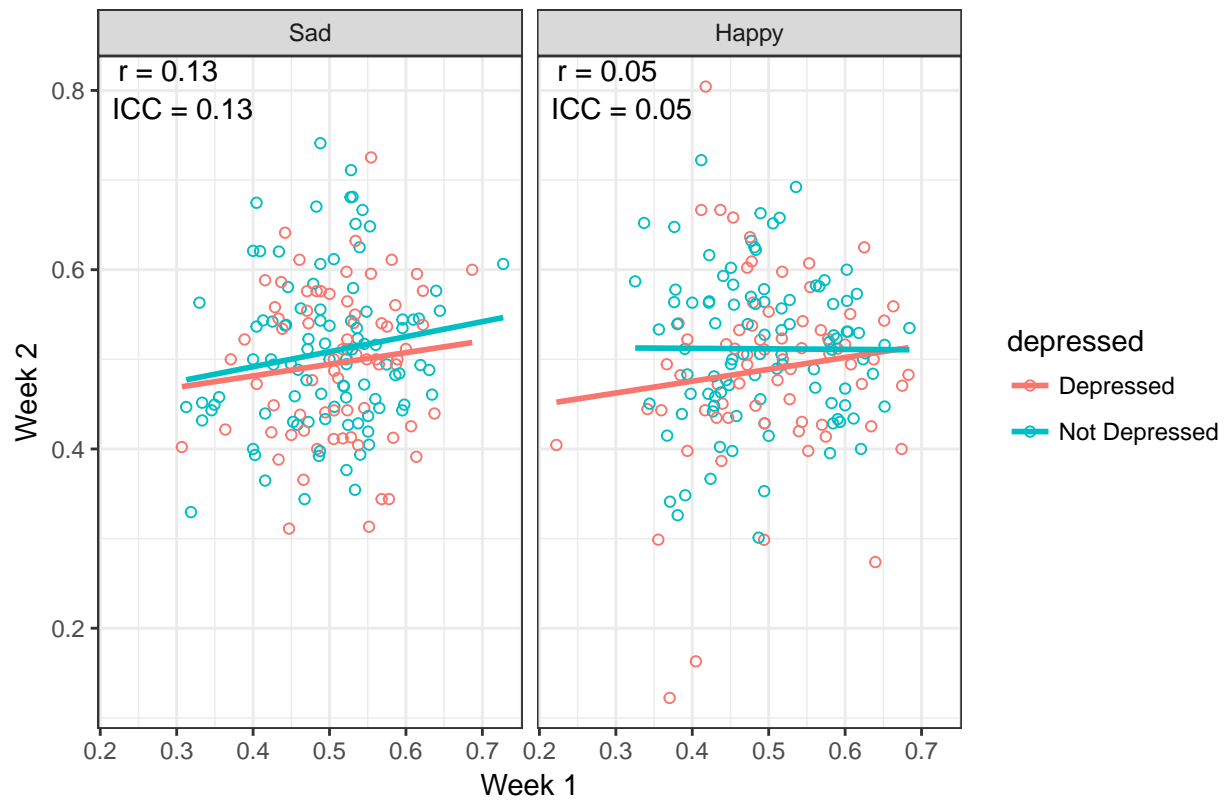
Traditional Bias (Dot Probe)



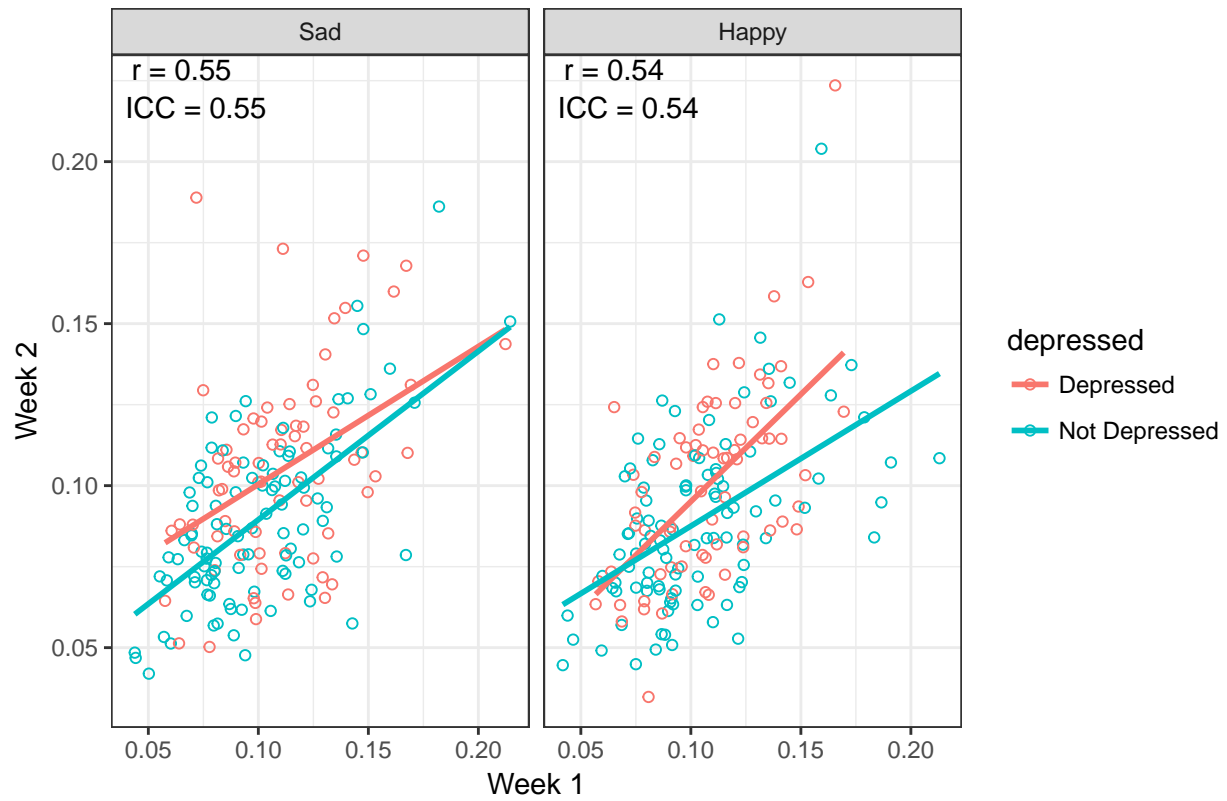
Fraction of Trials Toward (Dot Probe)



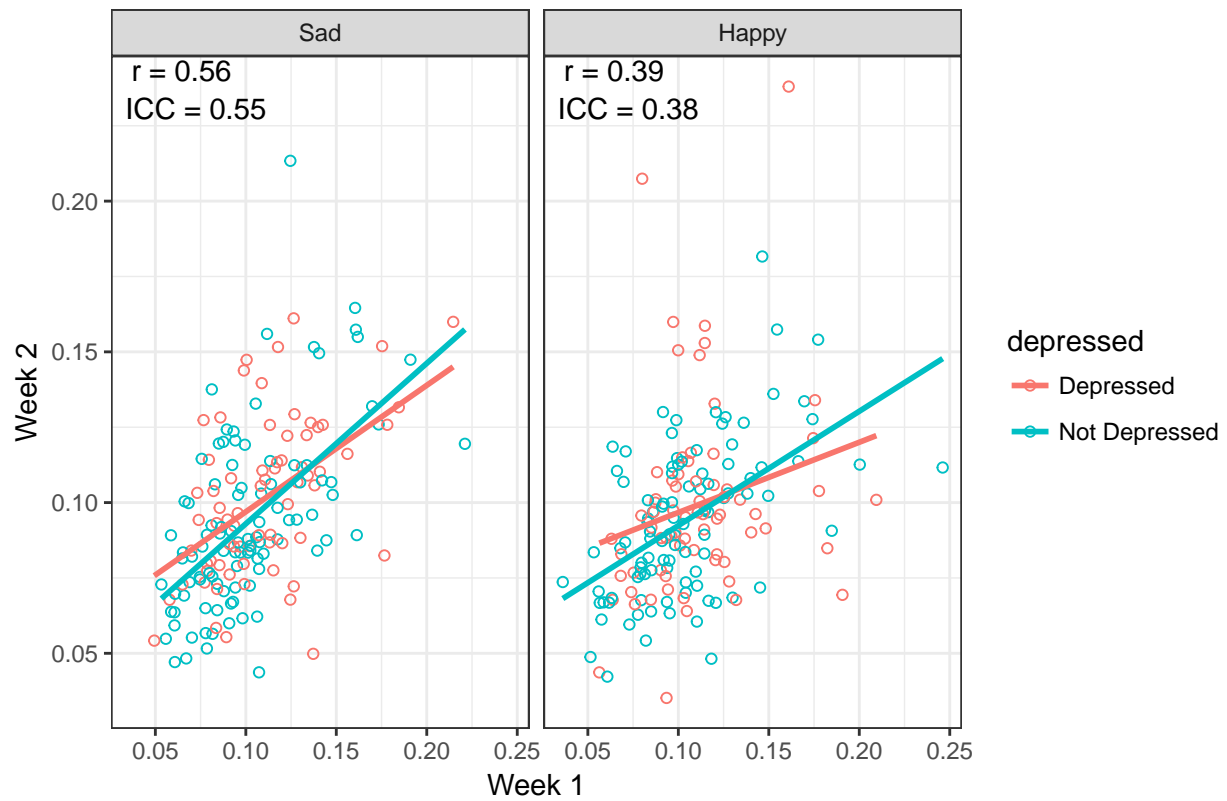
Fraction of Trials Away (Dot Probe)



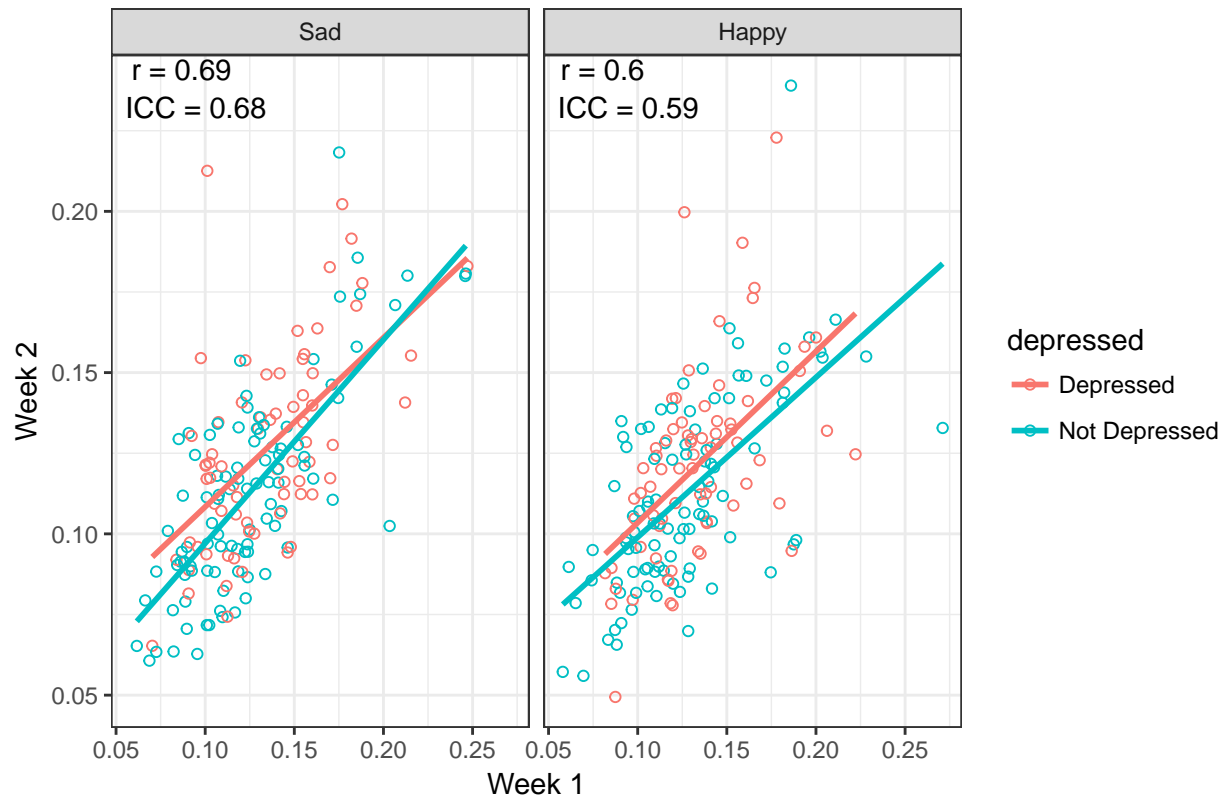
Mean Bias Toward (Dot Probe)



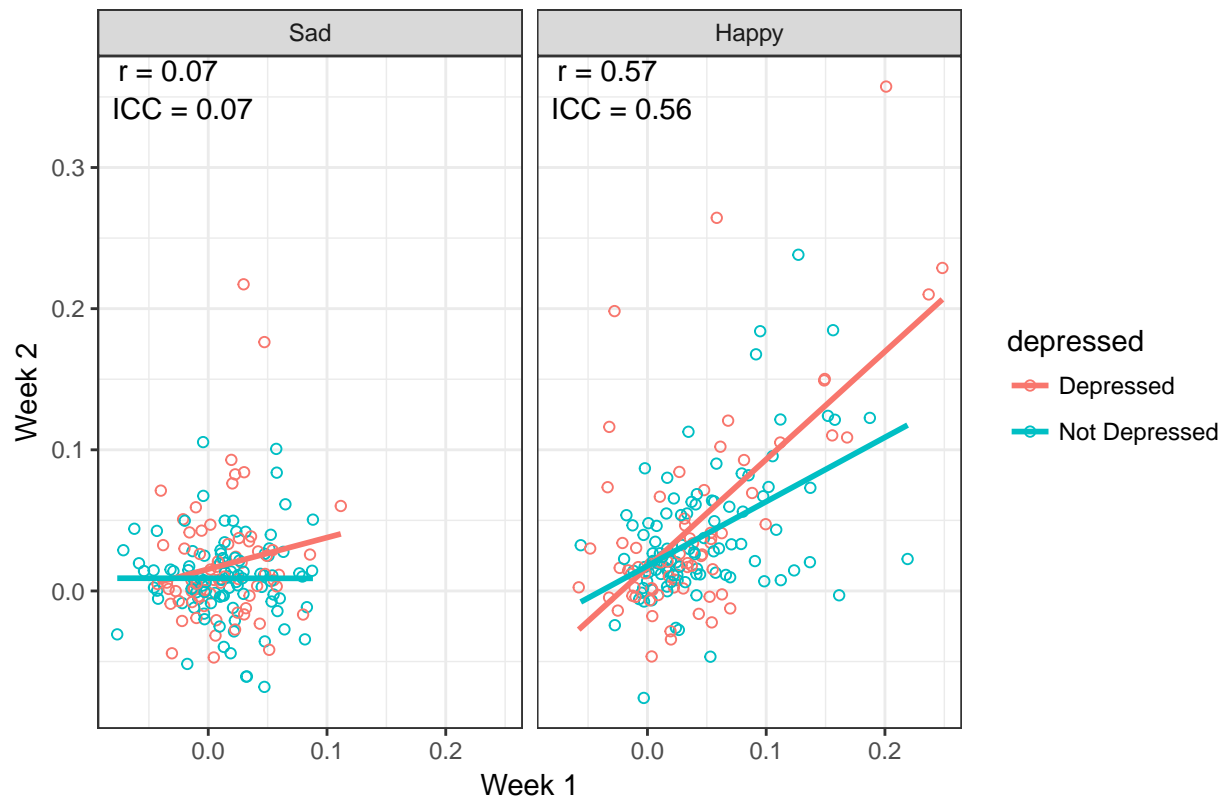
Mean Bias Away (Dot Probe)



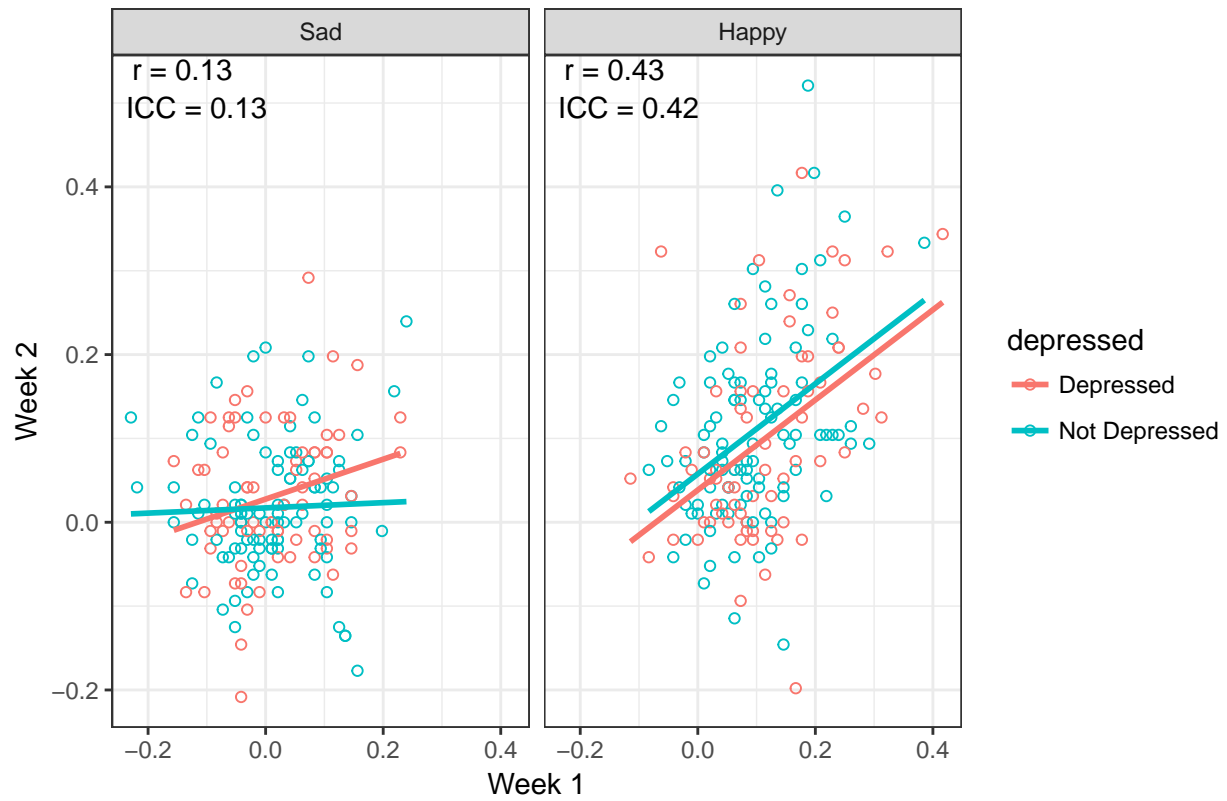
Variability in Bias (Dot Probe)



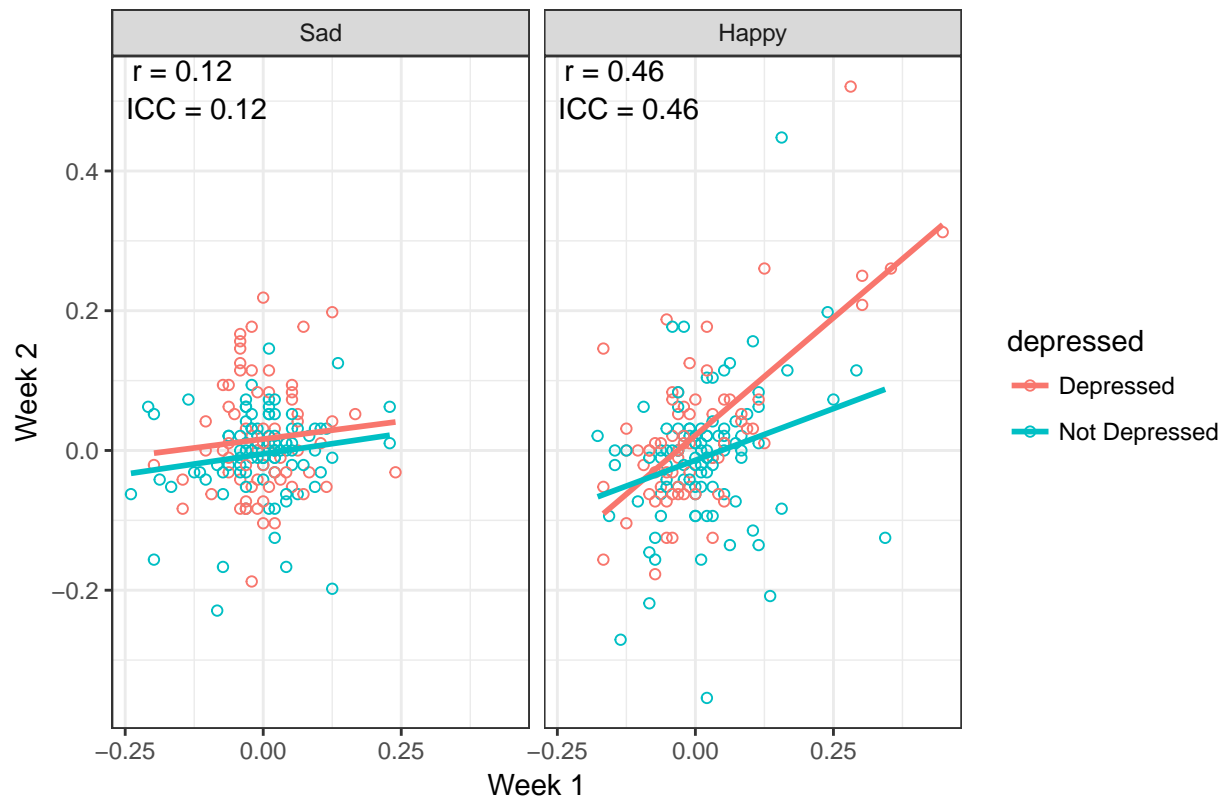
Total Bias (Eye Track)



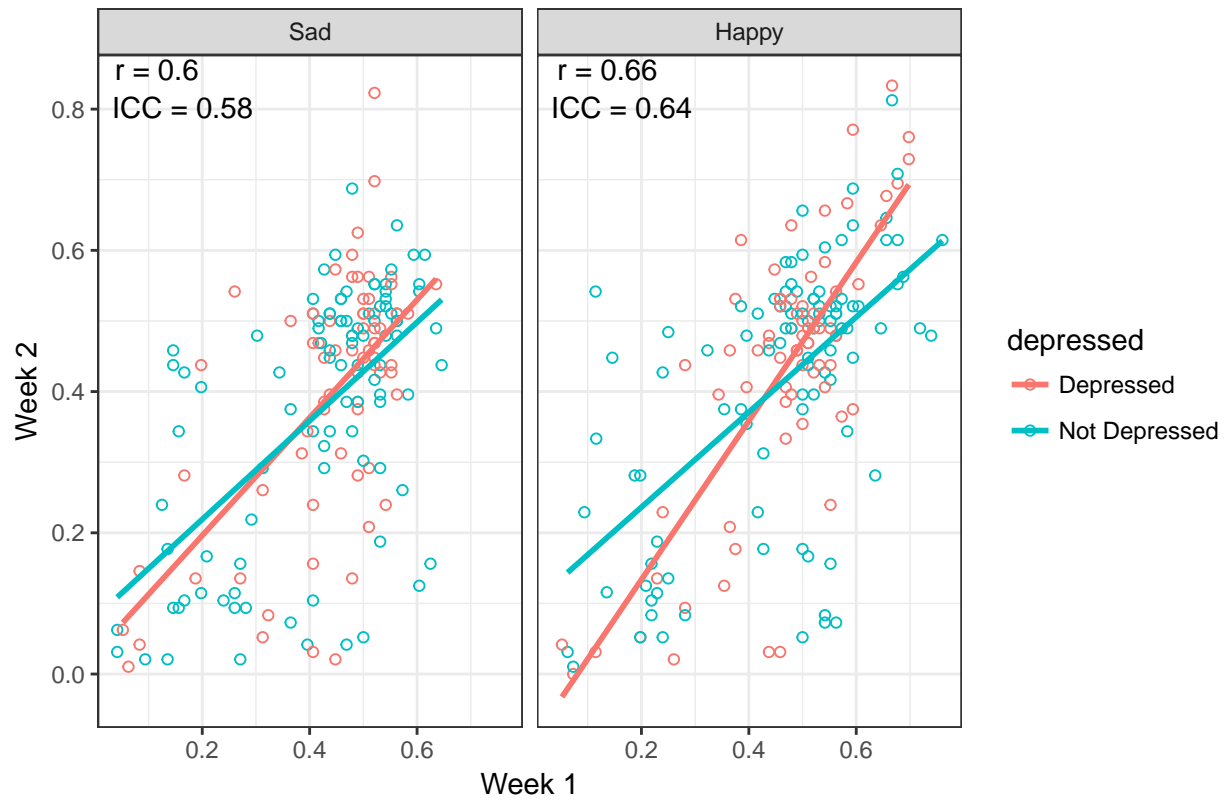
Initial Bias (Eye Track)



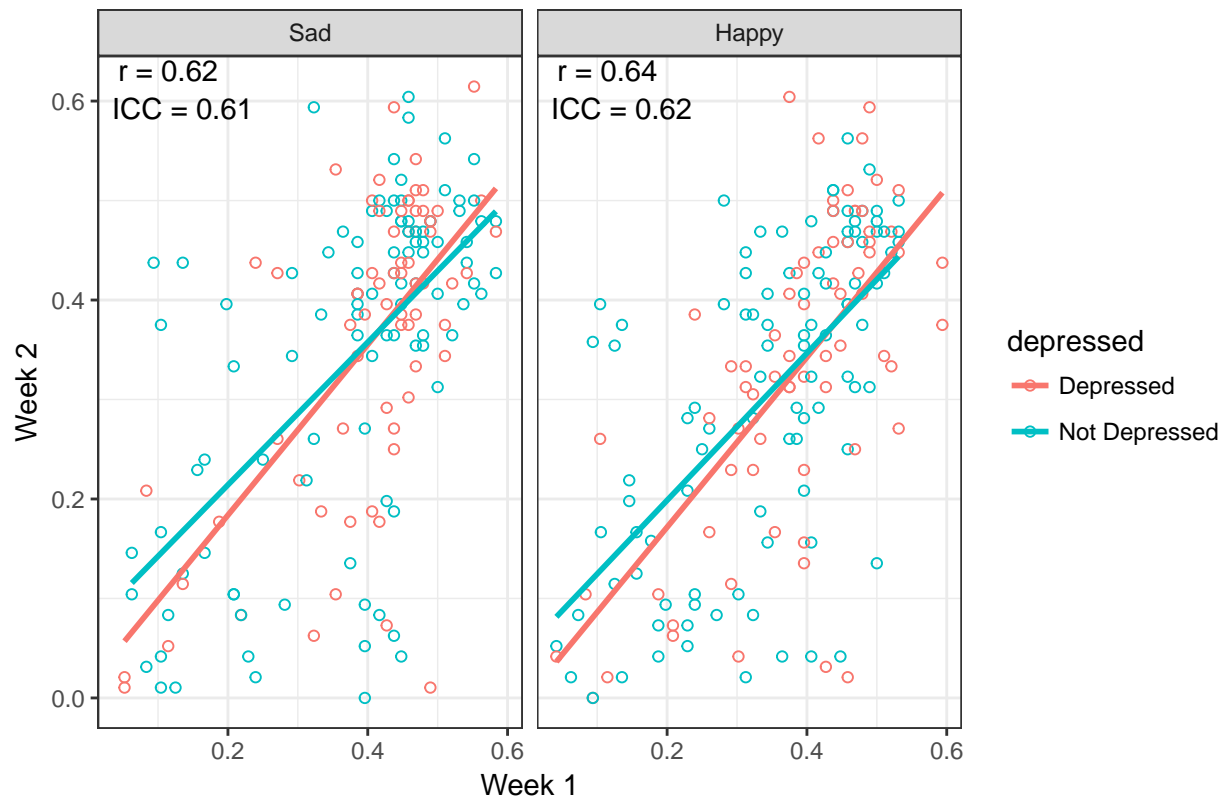
Final Bias (Eye Track)



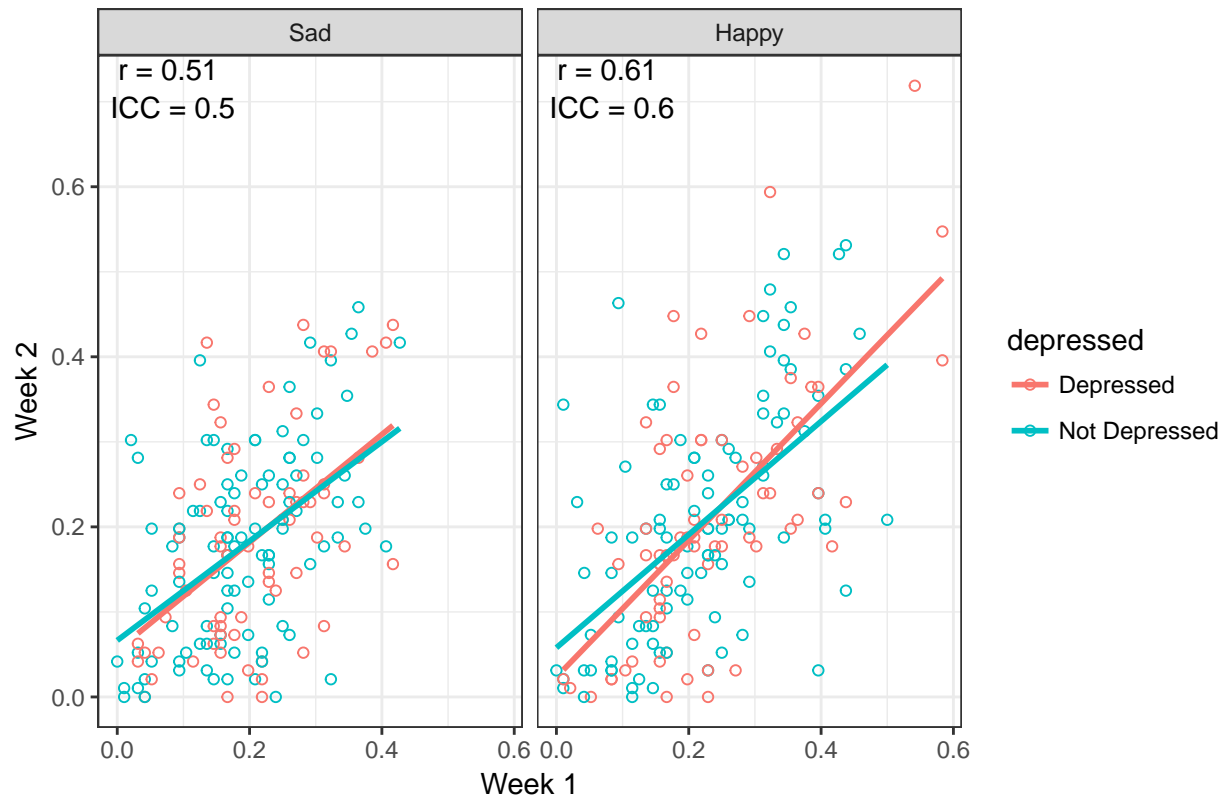
Fraction of Trials Toward (Eye Track)



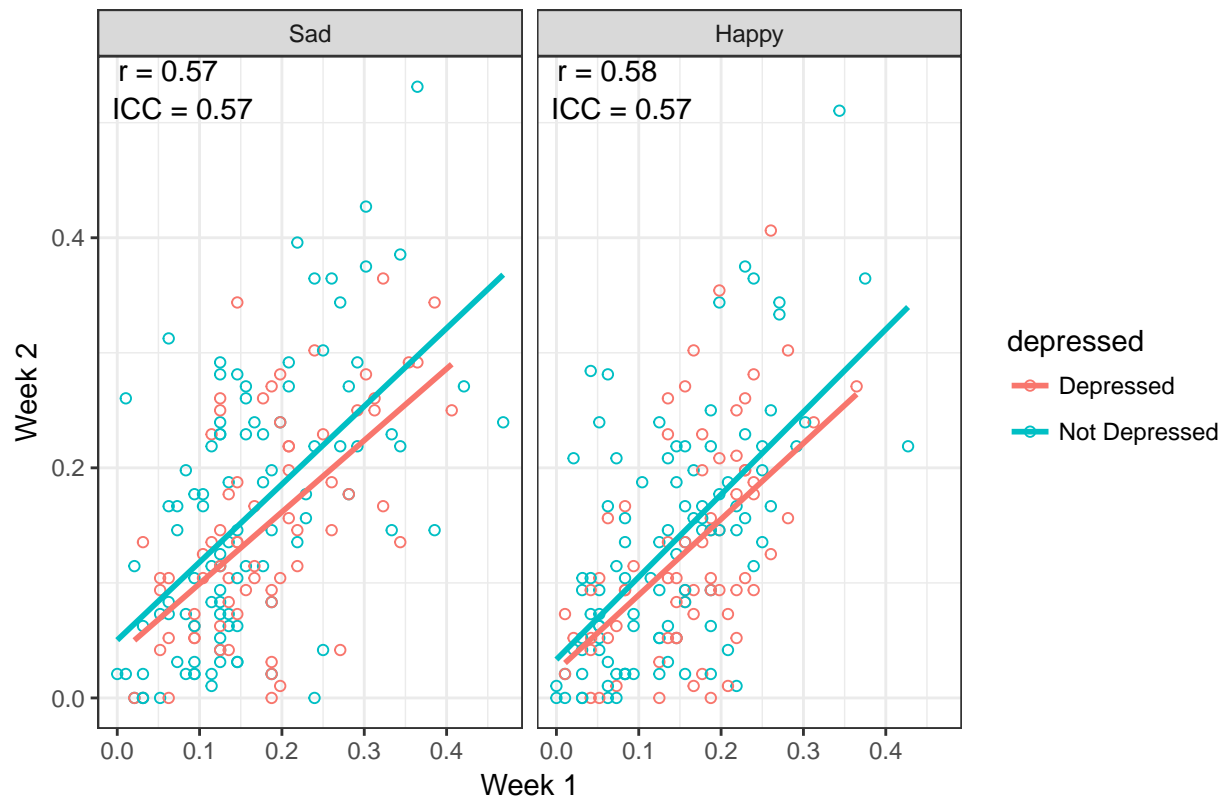
Fraction of Trials Away (Eye Track)



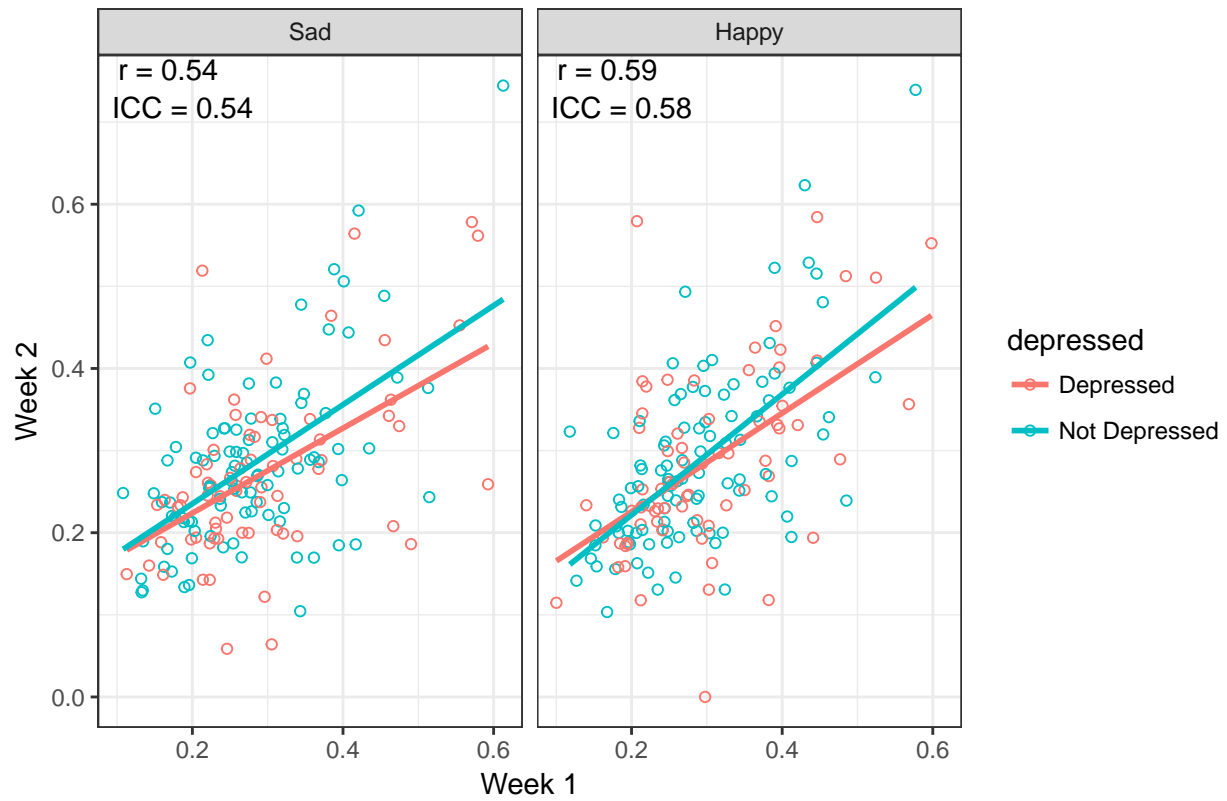
Fraction of Trials Strongly Toward (Eye Track)



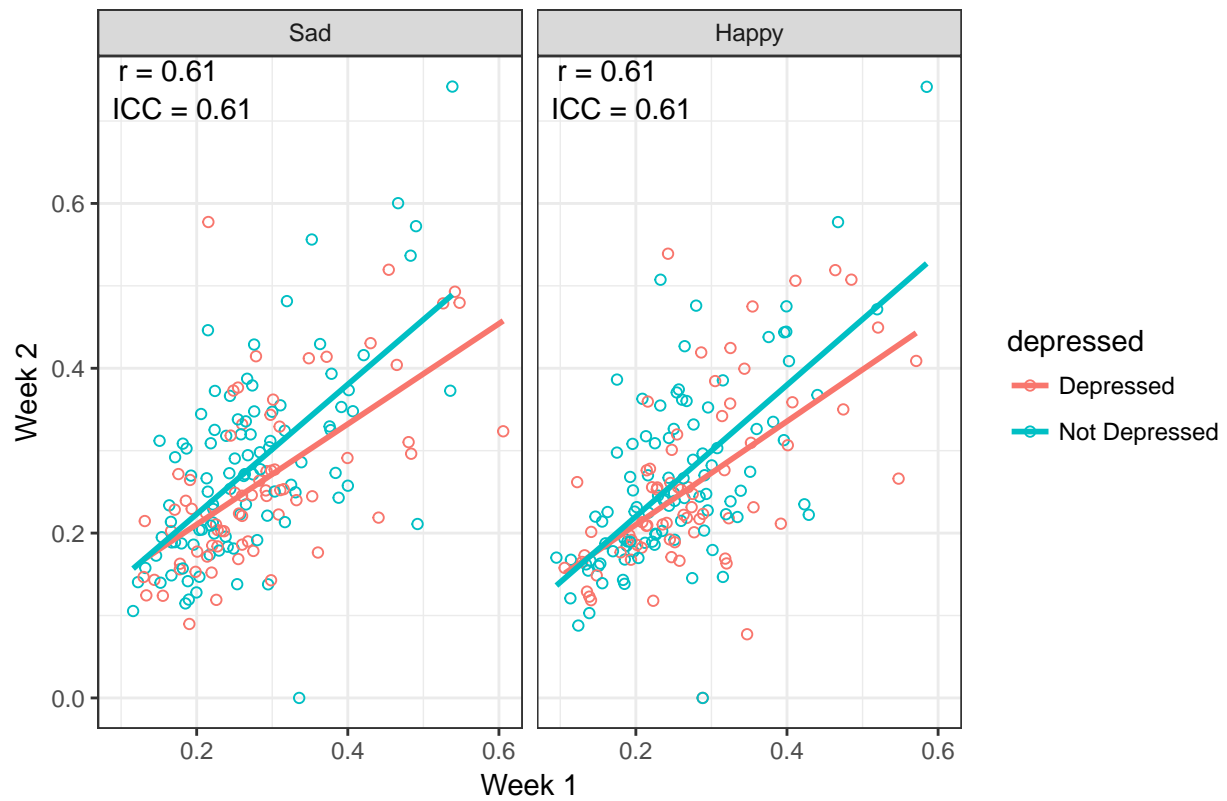
Fraction of Trials Strongly Away (Eye Track)



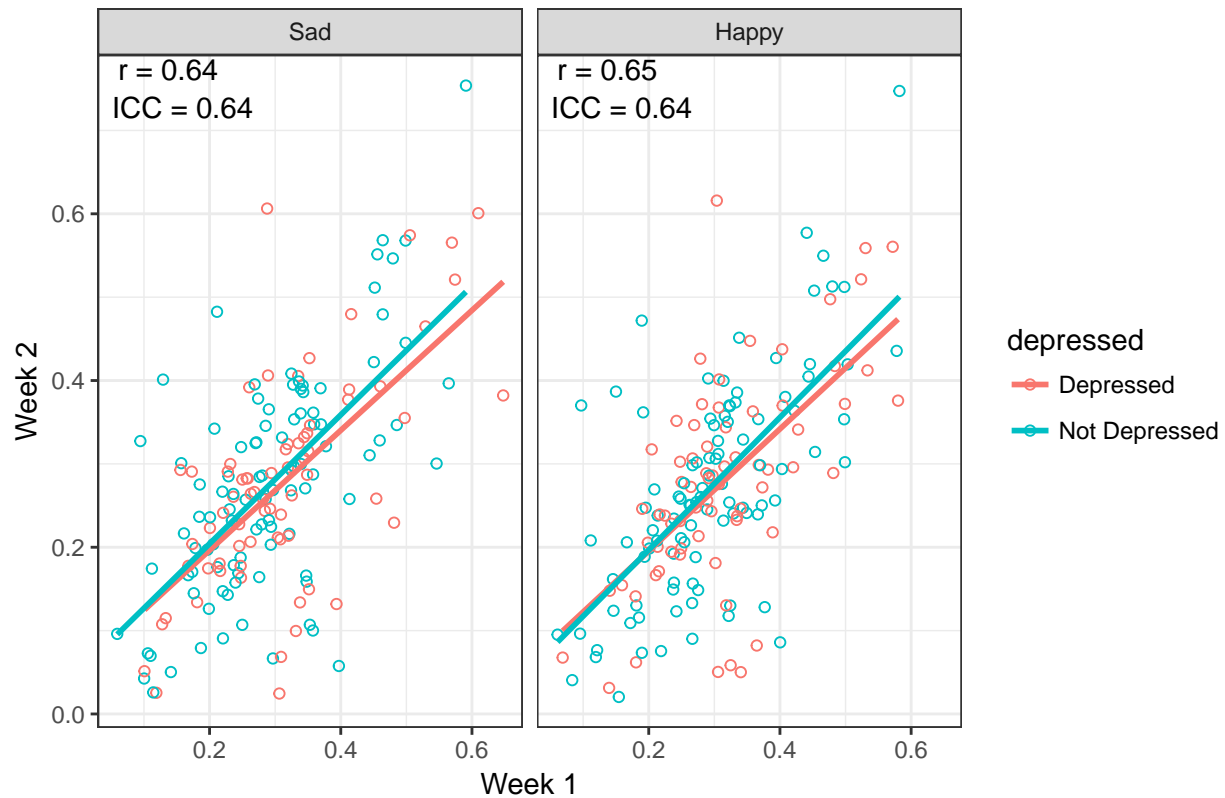
Mean Bias Toward (Eye Track)



Mean Bias Away (Eye Track)



Variability in Bias (Eye Track)



```
## Mean within-person correlation between TLBS (derived from dot probe)
## and trial-level fixation bias (derived from eye tracking):
## 0.12, 95% CI [0.1, 0.14]
```

```
##               correlates      r    n    p
## dp_bias_1 <-> final_gaze_bias_1 0.45 195 <.001
## dp_bias_1 <-> gaze_bias_1       0.27 195 <.001
## dp_bias_1 <-> init_gaze_bias_1  0.14 195  .106

##               correlates      r    n    p
## mean_dp_toward_1 <-> pct_gaze_toward_1 0.38 195 <.001
## mean_dp_toward_1 <-> mean_gaze_toward_1 0.22 195  .007
## pct_dp_toward_1 <-> mean_gaze_toward_1 0.13 195  .137
## pct_dp_toward_1 <-> pct_gaze_toward_1 -0.05 195  .619

##               correlates      r    n    p
## mean_dp_away_1 <-> pct_gaze_away_1 0.32 195 <.001
## pct_dp_away_1 <-> pct_gaze_away_1 0.14 195  .094
## mean_dp_away_1 <-> mean_gaze_away_1 0.14 195  .095
## pct_dp_away_1 <-> mean_gaze_away_1 -0.05 195  .579

##               correlates      r    n    p
## var_dp_bias_1 <-> var_gaze_bias_1 0.33 195 <.001
```