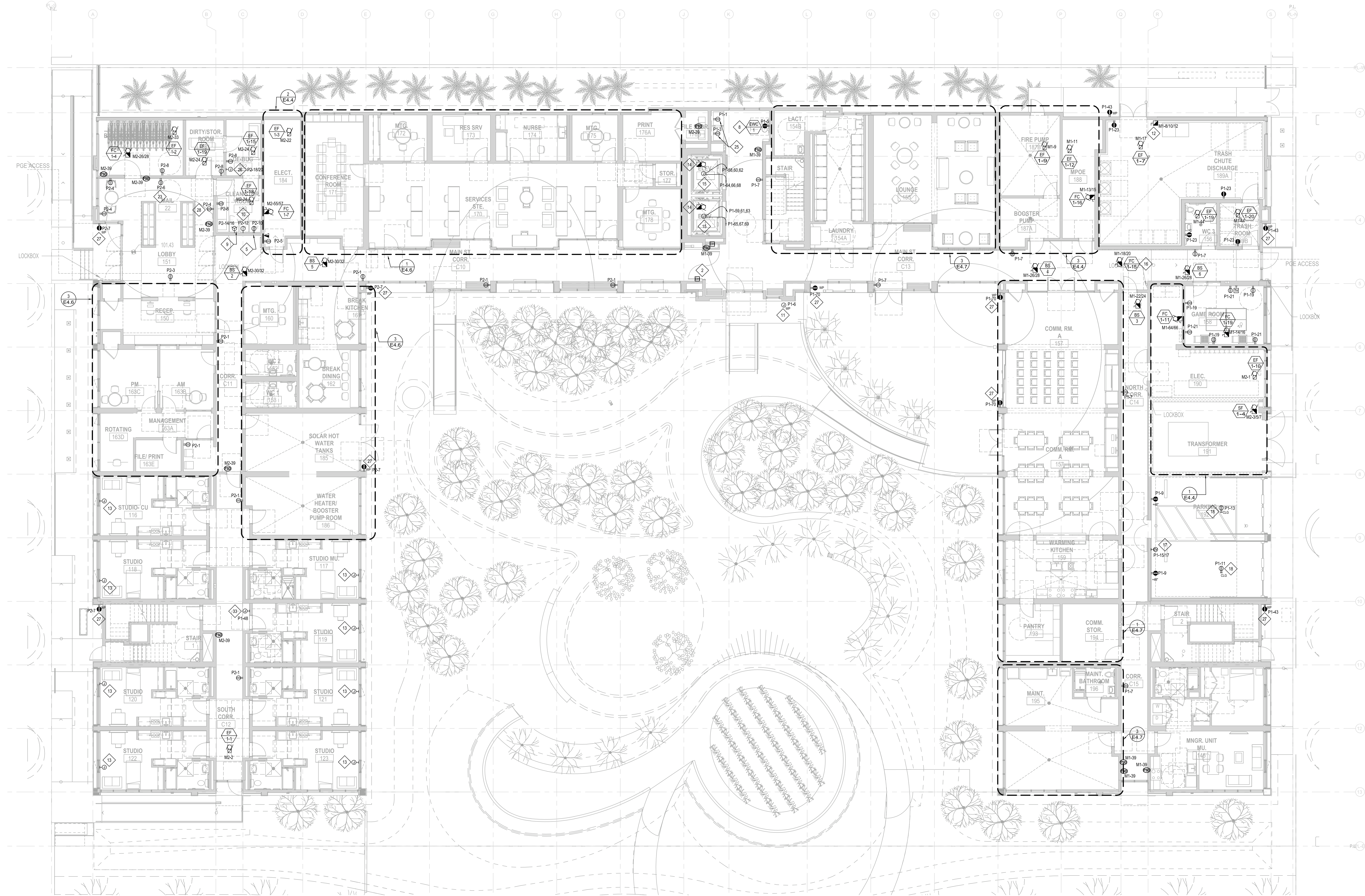


GENERAL NOTES:

1. VERIFY ALL MECHANICAL EQUIPMENT EXACT LOCATION AND REQUIREMENTS WITH MECHANICAL DRAWING.
2. VERIFY SECURITY REQUIREMENTS WITH SECURITY DRAWINGS.
3. TYPICAL AT EACH TELECOM ROOM, PROVIDE TWO 120V, 20A DEDICATED POWER CIRCUITS, VERIFY WITH LOW VOLTAGE DESIGN BUILD CONTRACTOR.
4. COORDINATE FIRE SMOKE DAMPER (FSD) LOCATIONS WITH MECHANICAL, PROVIDE 120V CONNECTION TO EACH FSD, MAXIMUM 25 FSD'S ON SINGLE 120V, 20A CIRCUIT.
5. SEE UNIT E4.1, E4.2 AND E4.3 PLANS FOR DEVICE LAYOUT AND REQUIREMENTS.

SHEET NOTES:

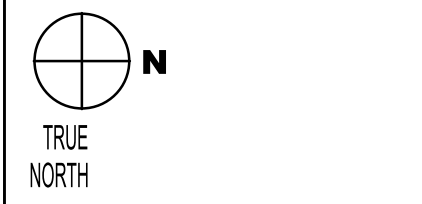
1. TYPICAL AT EACH UNIT ENTRY, FIRE RATED ACCESS PANEL FOR UNIT FEEDER T CONNECTION, VERIFY LOCATION.
2. TYPICAL DOOR HOLD OPEN, COORDINATE WITH FIRE ALARM SHOP DRAWINGS FOR EXACT REQUIREMENT.
3. COPIER, 120V, VERIFY WITH OWNER.
4. TYPICAL, PROVIDE POWER PACK OR RELAY FOR RECEPTACLE CONTROL THRU OCCUPANCY SENSOR PER T-24.
5. REFRIGERATOR, 120V, VERIFY WITH OWNER.
6. MICROWAVE, 120V, VERIFY WITH OWNER.
7. TYPICAL FLOOR OUTLET WITH RECEPTACLE AND DATA, ROUTE CONDUIT TO OUTLET FROM CLOSEST WALL, UNDER SLAB TO FLOOR OUTLET.
8. DRINKING FOUNTAIN, 120V, VERIFY WITH OWNER.
9. TYPICAL CLOTHES DRYER IN LAUNDRY ROOM, 30A PLUG, VERIFY WITH OWNER.
10. TYPICAL, CLOTHES WASHER, 120V, PROVIDE 20A DEDICATED OUTLET.
11. PROVIDE 120V, DEDICATED CIRCUIT FOR IRRIGATION CONTROLLER, VERIFY EXACT LOCATION AND REQUIREMENT WITH LANDSCAPE.
12. TRASH COMPACTOR, 208V, 30, 5HP, VERIFY EXACT SIZE AND REQUIREMENT.
13. MOTORIZED AWNING WINDOW OPERATOR, 120V, PROVIDE POWER IN CEILING SPACE, CONNECT TO UNIT LOAD CENTER.
14. PROVIDE POWER FOR ELEVATOR CONTROLLER & MOTOR CONNECTION, SEE ELEVATOR DETAIL.
15. PROVIDE POWER FOR ELEVATOR BRANCH CIRCUITS, SEE ELEVATOR DETAIL.
16. UNIT WITH DUCT SMOKE DETECTOR, PROVIDED AND WIRED BY ELECTRICAL, INSTALLED BY MECHANICAL, COORDINATE WITH MECHANICAL.
17. FUTURE ELECTRIC VEHICLE CHARGING STATION, PROVIDE 1" CONDUIT FROM ELECTRICAL PANEL IN ELECTRICAL ROOM AND TERMINATE IN A J-BOX IN THE GARAGE, PROVIDE 1/2" CONDUIT TO CLOSEST BF ROOM FOR DATA AND TERMINATE IN A J-BOX.
18. POWER FOR OVER HEAD ROLLUP DOOR, VERIFY EXACT REQUIREMENT.
19. CEILING MOUNTED PROJECTOR, 120V, PROVIDE DATA OUTLET, J-BOX FOR AV CONNECTION TO WALL STATION WITH 1.5" WITH PULL CORD, VERIFY EXACT REQUIREMENT.
20. MOTORIZED PROJECTION SCREEN WITH WALL SWITCH, VERIFY EXACT REQUIREMENT.
21. PROJECTOR WALL STATION, VERIFY EXACT REQUIREMENT.
22. ROLL-UP DOOR, 120V, VERIFY EXACT REQUIREMENT.
23. MAIL LOCKERS, 120V WITH DATA CONNECTION, VERIFY.
24. DISHWASHER AND GARBAGE DISPOSAL, 20A DEDICATED CIRCUIT EACH, PROVIDE SWITCH ON COUNTER, VERIFY.
25. VENDING MACHINE, 120V.
26. DEBUG HEATER, VERIFY EXACT REQUIREMENT, ALL ELECTRICAL EQUIPMENT IN THE ROOM TO BE RATED FOR THE DEBUG HEAT, VERIFY EXACT REQUIREMENT.
27. PROVIDE EXTERIOR OUTLET IN LOCKED ENCLOSURE, MOUNT AT +24" AFF., COORDINATE.
28. TELEVISION OUTLET, COORDINATE EXACT LOCATION WITH LOW VOLTAGE PLANS.
29. GARBAGE DISPOSAL, 120V.
30. ELECTRIC RANGE, 208V, 50A OUTLET.
31. RANGE HOOD, 120V.
32. ELECTRIC STOVE TOP, 208V, 50A OUTLET, VERIFY WITH EQUIPMENT.
33. PROVIDE J-BOX ABOVE CEILING FOR POWER SUPPLY PANEL FOR WINDOW ALARM SOUNDERS, PROVIDE (1) 5/8" WITH PULL CORD TO EACH UNIT'S WINDOW, COORDINATE WITH LOW VOLTAGE PLANS.



1 LEVEL 1 FLOOR PLAN - POWER & SIGNAL
SCALE: 1/8"=1'-0"

FOR REFERENCE ONLY,
ALL WORK AT LEVEL 1
WILL BE SITE-BUILT

| # | DATE | ISSUES & REVISIONS |
|----|----------|--------------------|
| F1 | 01/09/20 | NTA 01 |
| | | |
| | | |
| | | |
| | | |
| | | |
| | | |



DRAWN BY:
PROJECT NUMBER:
ISSUED FOR: NTA 01

SHEET ISSUE DATE:
SHEET TITLE:

LEVEL 1
FLOOR PLAN
POWER &
SIGNAL

SHEET NUMBER
EF2.1