

PRE-TREATMENT REPORT

UCM, TG119
0097

Clinic: RadOnc UChicago Medicine
5758 S Maryland Avenue
Chicago IL 60637

Plan: 1 Prostate-6FFF-TB2
Planned: 5/19/2020 4:17 PM Ji Li
Measured: 5/20/2020 4:25 PM planning
Comments:

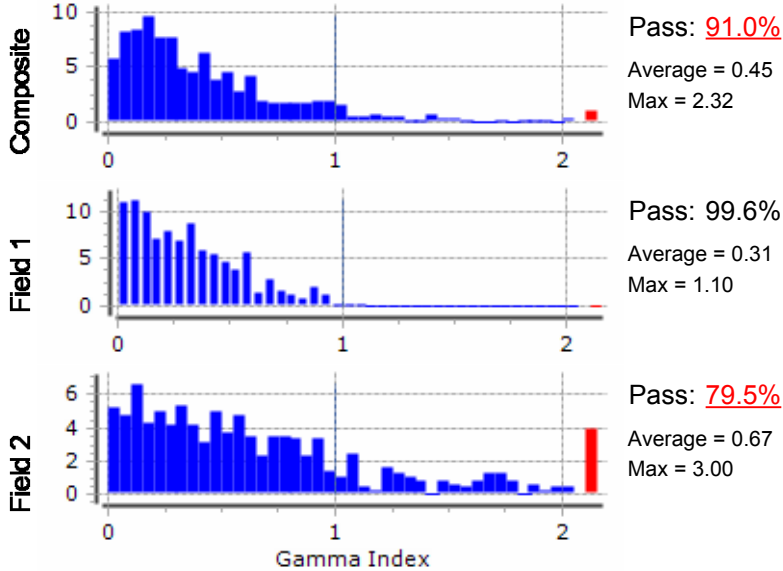
Treatment Summary

Radiation Device: TrueBeamSN1203
Temperature: 22.0 °C
Reference: Planned Dose

Beam	Gantry	Energy	Daily corr factor	Norm dose	Det within acceptance Dev	DTA	γ -index	Median dose dev
Composite				186 cGy	98.8%	96.3%	<u>91.0%</u>	-0.3%
Field 1	181° to 179°	6 MV, FFF.039		106 cGy	99.8%	99.5%	99.6%	0.7%
Field 2	179° to 181°	6 MV, FFF.039		111 cGy	87.1%	88.7%	<u>79.5%</u>	-1.3%

Histograms

Reference: Planned dose



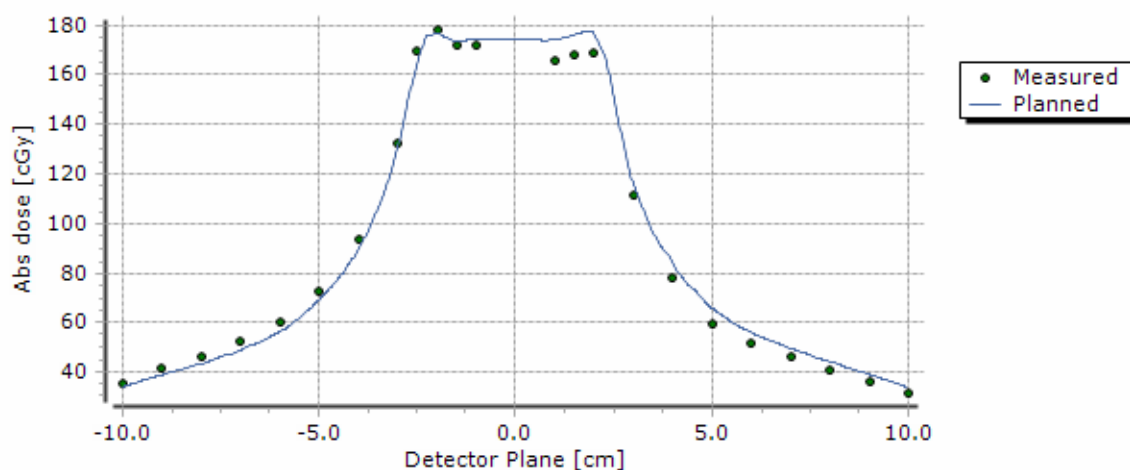
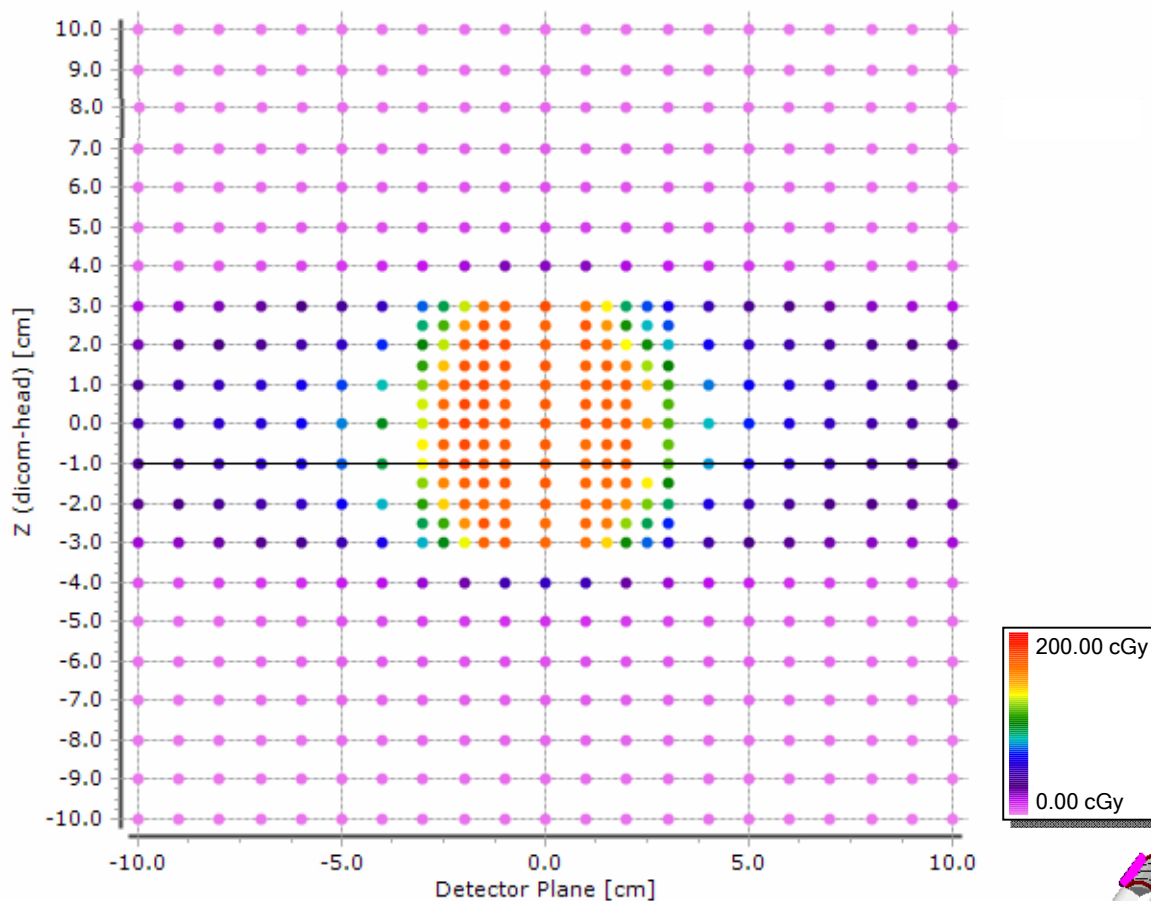
Parameter Definitions & Acceptance Criteria, Detectors

Parameter	Selected Detectors	Δ Dose	Δ Dist	Acceptance Limits
Dose Deviation	Dose from 10% to 500%	n.a.	n.a.	90% within $\pm 5.0\%$
Dist to Agreement	Gradient $\geq 1\%/mm$	n.a.	n.a.	90% with DTA ≤ 3.0 mm
Gamma Index	Dose from 10% to 500%	$\pm 2.0\%$	2.0 mm	95% with gamma ≤ 1

PRE-TREATMENT REPORT

UCM, TG119
0097

Absolute dose, Composite



PRE-TREATMENT REPORT

UCM, TG119
0097

Absolute dose, Composite

