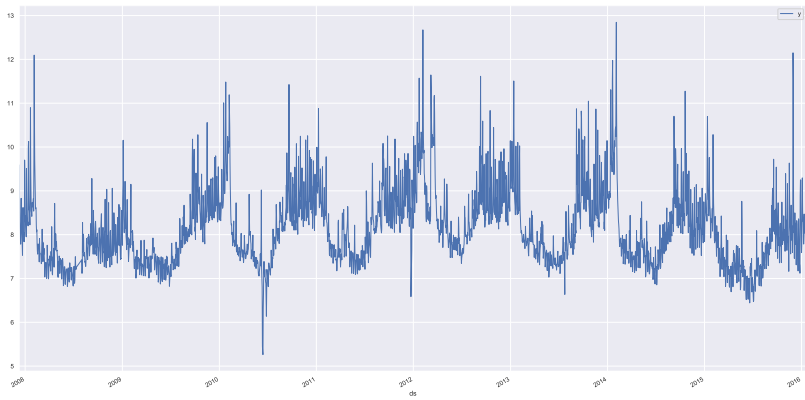


Simple Model Test

Author

2019-12-18

Data Plot

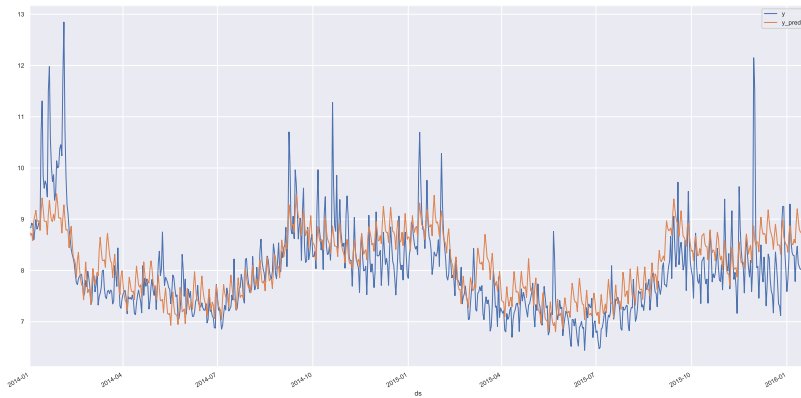


Train set

- ▶ **train end date** 20131231
- ▶ **seasonality**

	monthly	quarter	yearly	weekly
condition_name				
fourier_order	12	10	10	3
mode	additive	additive	additive	additive
period	30.5	91.125	365.25	7
prior_scale	10.0	5.0	10.0	10.0

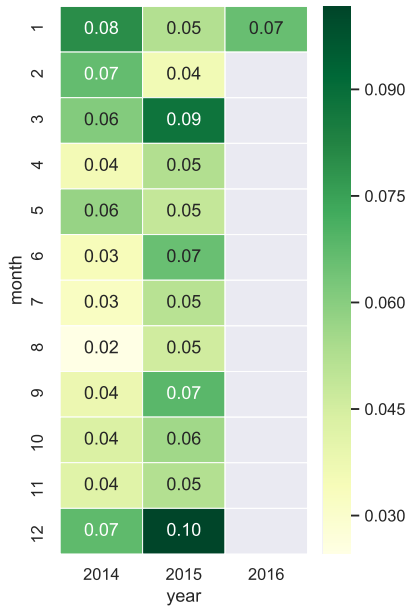
Prediction Result



Error analysis

```
1 def kpi_mape(df, y_true, y_pred):  
2     # mape group by yearmonth  
3     df[y_pred] = df[y_pred].clip(0, None)  
4     df['diff'] = abs(df[y_true] - df[y_pred])  
5     mape_df = df.groupby(['year',  
6         'month']).agg({'diff': 'sum', y_true:  
7         'sum'}).reset_index()  
8     mape_df['mape'] = mape_df['diff'] /  
9         mape_df[y_true]  
10    res_df = mape_df.pivot(index='month',  
11        columns='year', values='mape')  
12    return res_df
```

Error analysis (plot)



Note

Prophet with no holidays info